

和勤精機股份有限公司

China Fineblanking Technology Co., Ltd.

嘉興和新精沖科技有限公司

CFTC PRECISION (JIA_XING)LIMITED



和勤精機

和勤精機股份有限公司



關於和勤

1992

- 創立於1992
- 30年專業經驗精沖廠



1994

- 服務碟碟機零件(音圈馬達趨動器)客戶



2006

- 創立中國嘉興廠



2011~2015

- 2011年導入AOI視覺自動檢測系統(CCD)
- 2012年台灣廠IPO
- 2015年中國嘉興廠成為German Volkswagen Group (VW) T1供應鏈



2021

- 台灣廠成立營運總部，增設自動振動研磨線及化學鍍電鍍線
- 成立中國第1大精密沖壓廠(車用產業/產能)

和勤基地



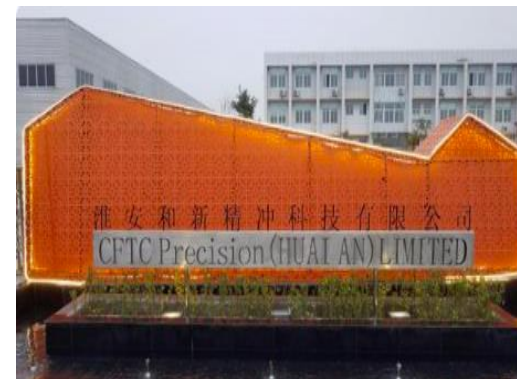
中國廠 (嘉興, 浙江)

面積: 18.000m²
員工人數: 700人



台灣廠 (總部)

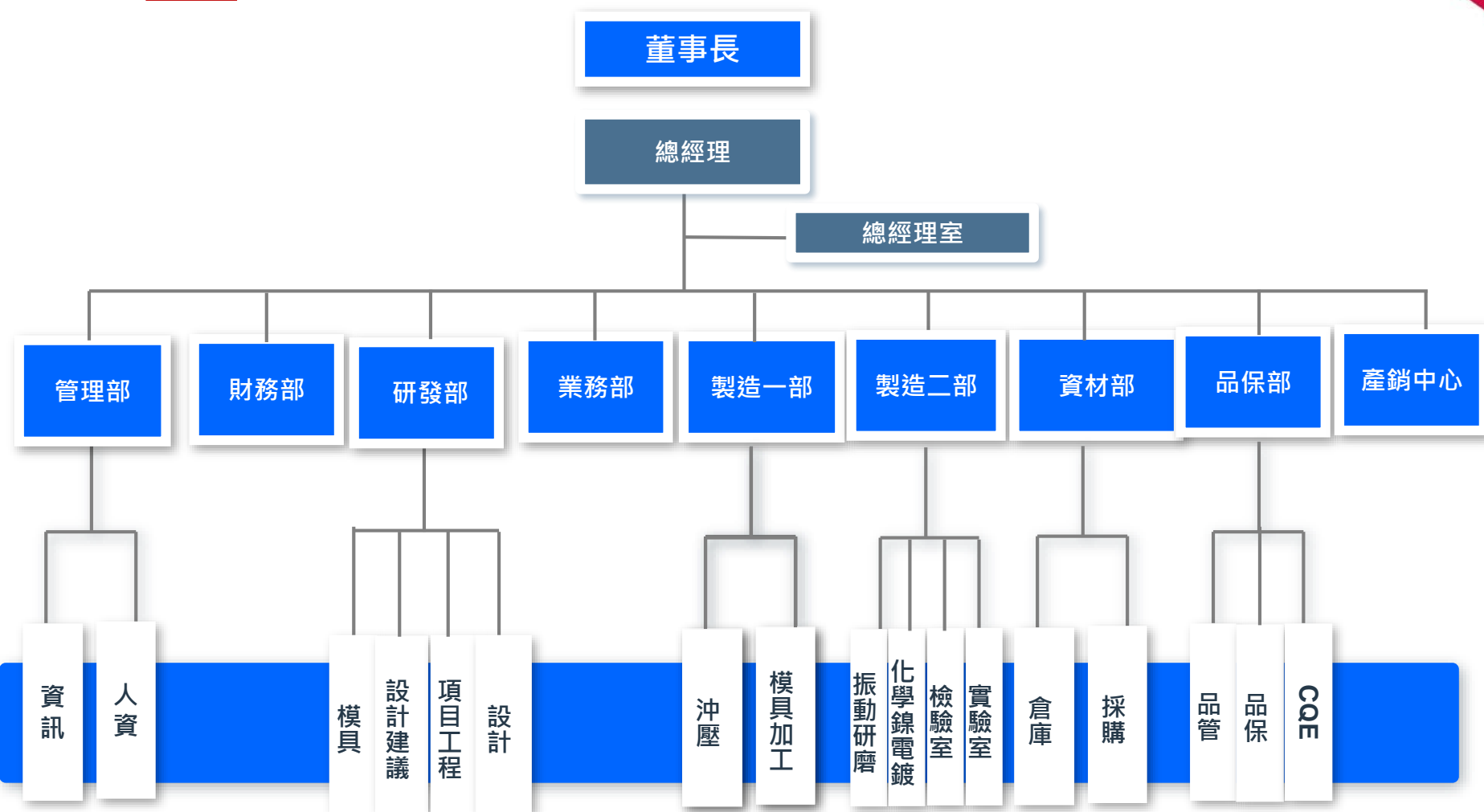
面積: 10.479m²
員工人數: 200人



中國廠 (淮安, 江蘇)

Area: 5,544m²
Employees: 40人

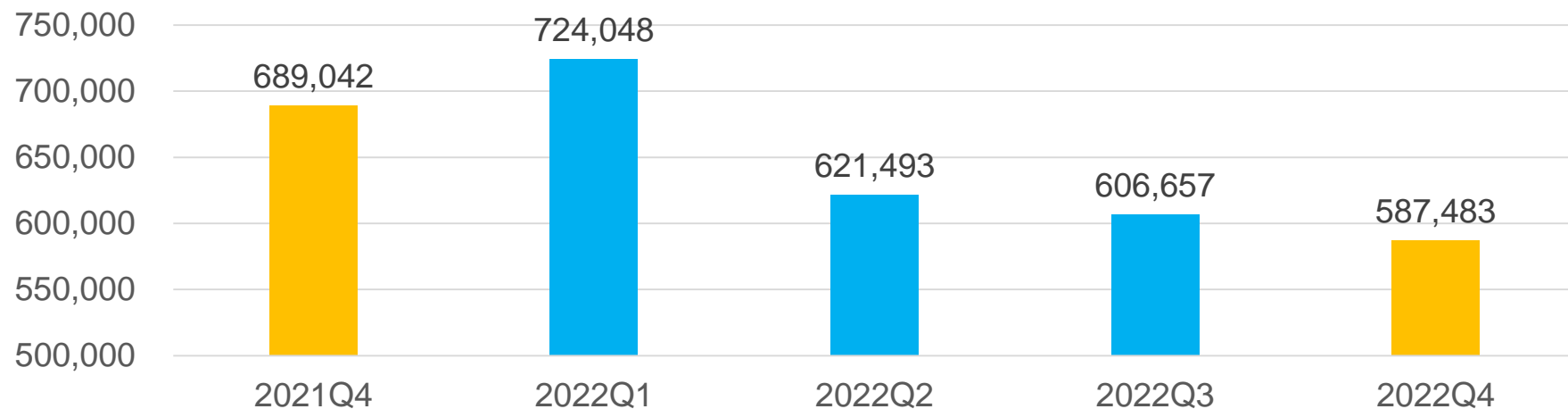
和勤組織圖



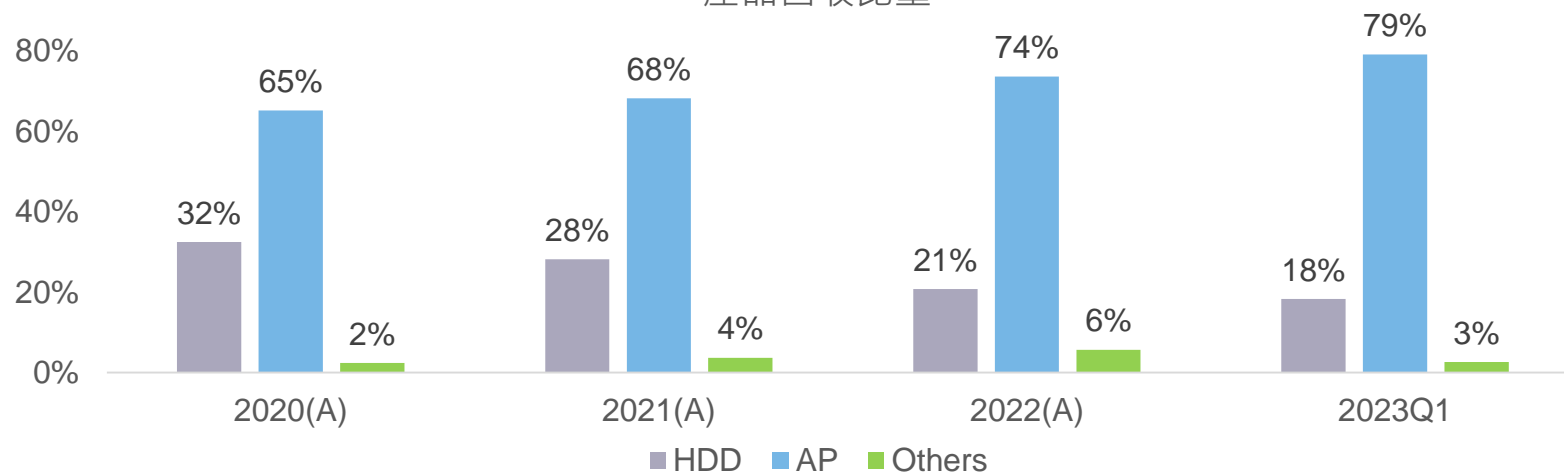
合併營收及產品比重

YoY -14.74%
QoQ -3.16%

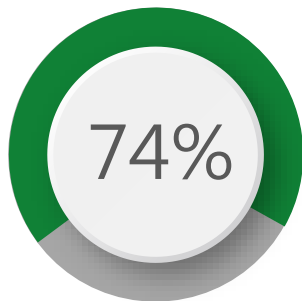
台幣仟元



產品營收比重



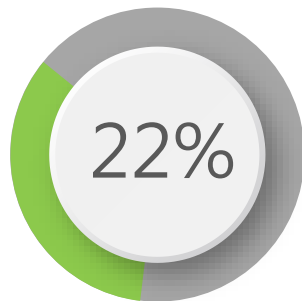
和勤營業比例



汽車零件



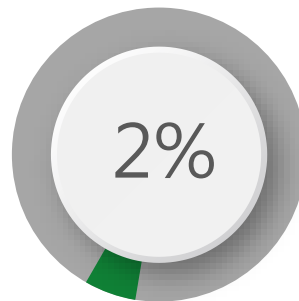
- ✓ 電池殼
- ✓ 自行車齒盤
- ✓ 門鎖及剎車零件
- ✓ 座椅調角器
- ✓ 油壓配油盤



硬碟機零件



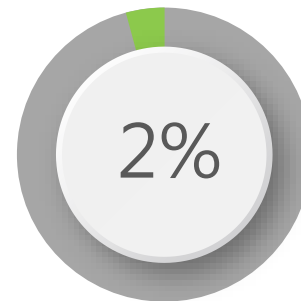
- ✓ 音圈馬達趨動器



熱處理



- ✓ 中國廠區
- ✓ 德國易普森設備
- ✓ Carbon-Nitrogen Process
碳氮共滲
- ✓ Carburization Process
滲碳處理
- ✓ Bright for Door Lock Parts
光亮淬火
- ✓ Quenching & Tempering Process
調質



模具



- ✓ 中國廠區
- ✓ 線割機(西部)
- ✓ CNC
- ✓ 放電加工

系統認證



ISO9001, IATF16949
ISO14001, ISO45001, D-U-N-S



產品介紹

2020Q3^{YTD}

product type	Product/Customer	Function application
<p>硬碟機 零件 HDD</p>	   	<p>完整製程能力，全球市佔率 30 %</p> <ul style="list-style-type: none"> ● 企業級硬碟 ● 桌上型電腦 ● 筆記型電腦 ● 消費電子 
<p>汽車零件 AUTO-MOBILE</p>	       	<p>沖鍛複合技術，高精度，高技術</p> <ul style="list-style-type: none"> ● 繼電器基座 ● 變速箱，發動機系列 ● 門鎖，剎車系列 ● 汽車油管、活塞製品、汽車傳感器部件等

產品介紹

▶ 自行車零件 (高端自行車及 E Bike)

▶ 齒盤類



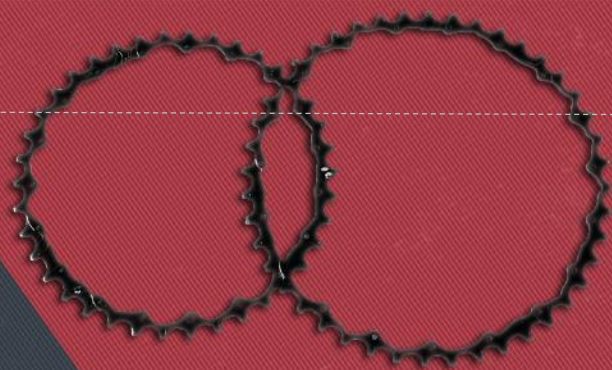
▶ 後飛輪組



產品介紹



PN: CHAINING (FRONT)
APPLICABLE MODEL: E BIKE



PN: CHAINING (BACK)
APPLICABLE MODEL: E BIKE



PN: REAR DERAILLEUR-FORK
APPLICABLE MODEL: GENERAL BIKE

GFTC 和勤精機 BICYCLE APPLICATION PARTS



PN: CASSETTE SPROCKETS (REAR DERAILLEUR)
APPLICABLE MODEL: GENERAL BIKE

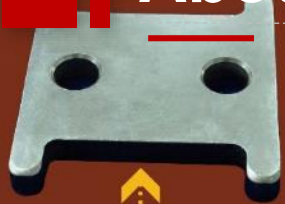


PN: OTHER
APPLICABLE MODEL: GENERAL BIKE



PN: SPROCKET
APPLICABLE MODEL: PANASONIC

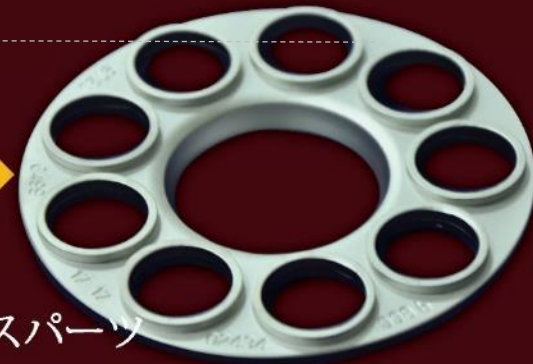
About Products



品名:ヨーク
対応車種:ハイパワーVFD内



品名:フランジ
対応車種:Ford



品名:ギアボックスパーツ
対応車種:その他

自動車パーツ工程



品名:クラッチ
対応車種:Nissan Teana,GM GL8,TOYOTA



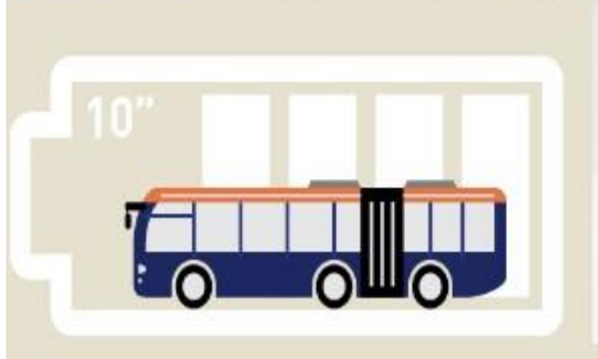
品名:ギアボックスパーツ
対応車種:CVTギアボックス



品名:カーシートパーツ
対応車種:Ford.GM.Honda

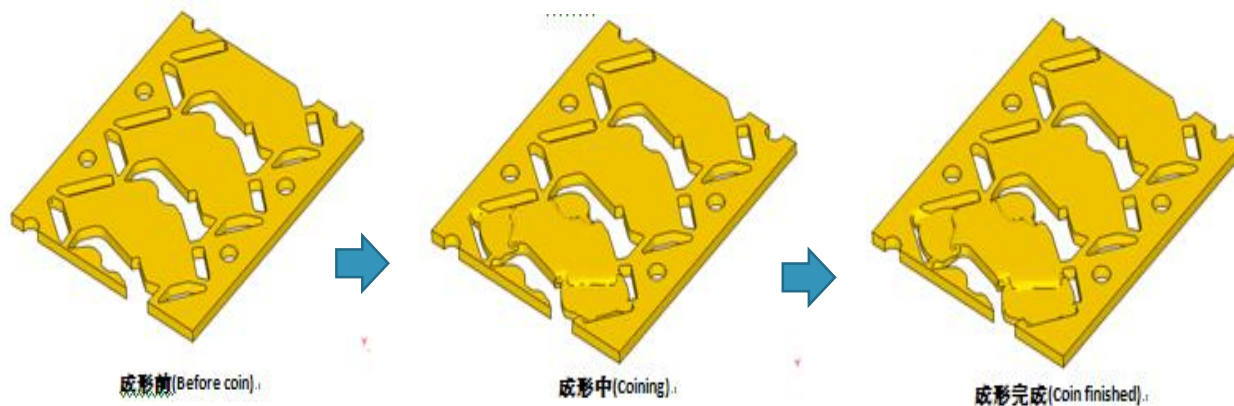
產品介紹

儲能系統，
電動巴士



技術介紹-模具成形分析

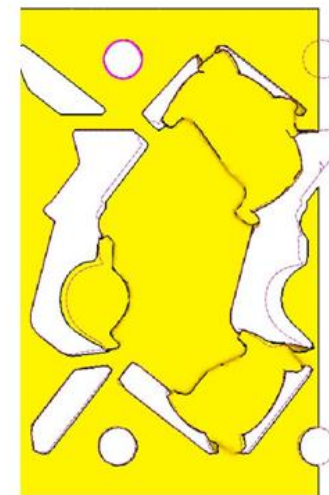
Ex. 針對打薄特徵模具設計的工藝來分析，取得較佳工藝參數。



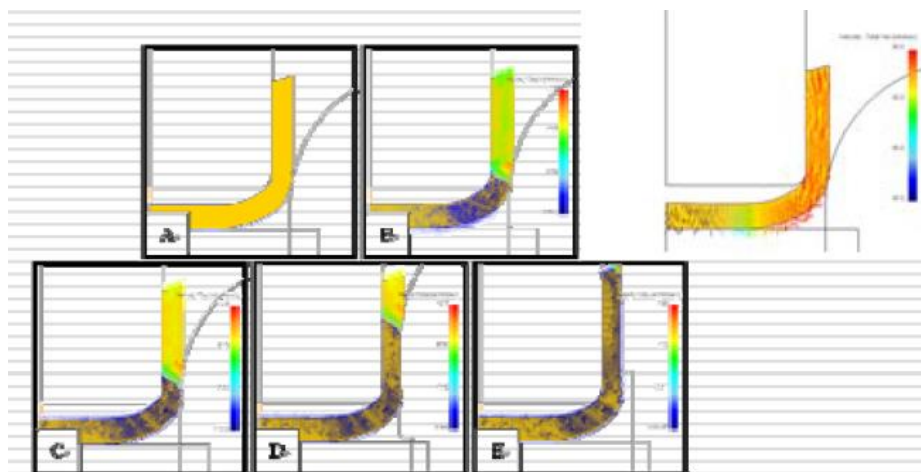
Before coin

Coin processing

Coin finished



Result: coin force & material flow state



折彎的成形分析

技術介紹-模具成形分析

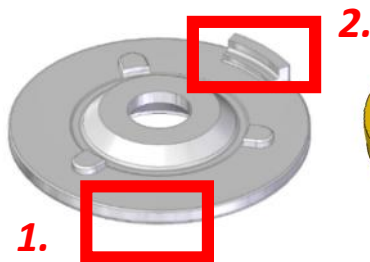
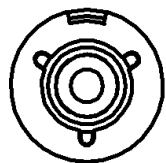
範例 (1)

材料:AL5052-O

原來製程: 材料 → 機加工(車削+銑削)



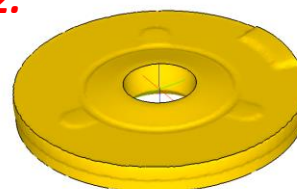
新設計製程: 材料 → 精沖+冷鍛



1.

2.

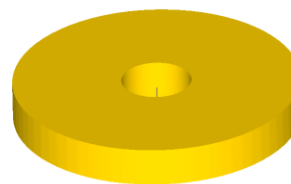
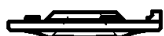
3D Drawing



Process analysis



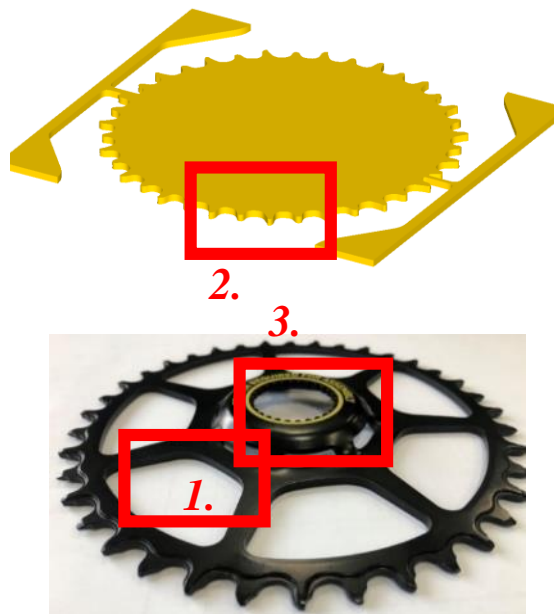
Final part



範例 (2)

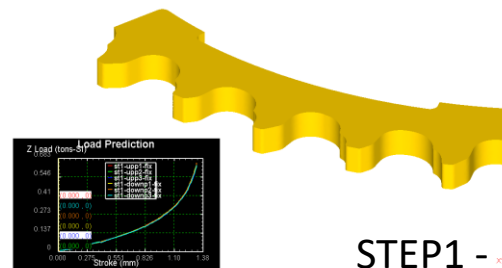
材料: SAE1518

1. 精沖 FINEBLANKING
2. 冷鍛 FORGING
3. 拉伸 DRAWING



模具設計前的預測和分析

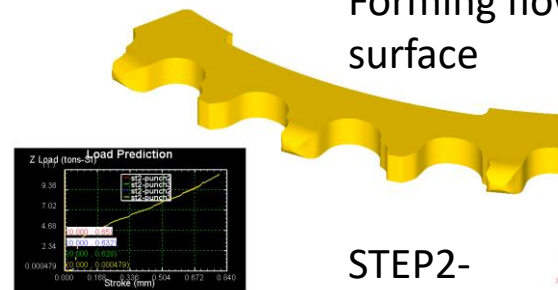
Prediction and analysis before tooling design



Load prediction

STEP1 - $\begin{matrix} z \\ y \\ x \end{matrix}$



齒輪面的成形流動
Forming flow of gear surface



Load prediction

STEP2- $\begin{matrix} z \\ y \\ x \end{matrix}$

齒輪幾何形狀分析
Forming analysis of gear geometry

Description	Model & Capacity	Brand / Country	China	Taiwan
精沖機 17臺 Fine Blanking Total <u>17sets</u>	FB-1000 	Mori / Japan	1	
	FB-800	Mori / Japan	2	
	HFA-700T 	FEINTOOL / Switzerland	3	
	FB-650	Mori / Japan	4	1
	HFT-450	FEINTOOL / Switzerland	1	
	FB-400	Mori / Japan	1	
	FB-320	Mori / Japan	2	
	MFA-250	FEINTOOL / Switzerland	1	1



沖壓沖床設備

Description	Machine#	Brand / Country	China	Taiwan	Hydraulic System
曲軸式連桿沖床 Line Motion Total: 47sets	SUD-1000	SANES / Taiwan		1	V
	KL-500	LONJI / Taiwan	1		V
	CBL-500	SANES / Taiwan	1	1	V
	KW2-400T	CHIN FONG/Taiwan	1		V
	CBL-400	SANES / Taiwan		1	V
	ISO-400	WETORI/Taiwan		1	V
	CBL-300	SANES / Taiwan	1	3	V
	KL-300	LONJI / Taiwan	3	4	V
	SPF2-300	SEYI / Taiwan	2		V
	GLD-260	SANES / Taiwan	4		V
	SC1-220	SANES / Taiwan		1	V
			13	12	
	LMP-200-H	LONJI / Taiwan	3		V
	SHI-160	SANES / Taiwan	10	1	V
	SC1-120	SANES / Taiwan	5	1	V
	NCP-80T	SINO / Taiwan		1	
	SN1-60T	SEYI / Taiwan		1	
			18	4	
	TOTAL	31	16		



量測設備

测量设备Equipment	品牌Manufacturer / Country	型号Model	精度Accuracy	软体software	China	Taiwan	行程Range
三坐标测量仪CMM Total 10 SET	海克斯康 HEXAGON	Pioneer 081206	2.5um	PC-DMIS CAD++4.3	1		800*1200*600
	海克斯康 HEXAGON	GLOBAL Silver Performance 050705	1.5um	PC-DMIS CAD+(scan)	1		500*700*500
	蔡司ZEISS	ZEISS CONTURA G2 776	1.8um	CALYPSO 5.6+(scan)	3		700*700*600
	Sheffield	Discovery-8 I	2.5um	MeasureMax	1		508*609*406
	Sheffield	Discovery-8 II	2.5um	MeasureMax		1	508*609*406
	Sheffield	Discovery-8 III	2.0um	MeasureMax	1		508*609*406
	三丰Mitutoyo	CRT-AV776	1.7um	MCOSMOS		1	700*700*600
	海克斯康 HEXAGON	Pioneer 06.08.06 plus	2.0um	PC-DMIS CAD++ 2017新版		1	600*800*600
影像测量仪	海克斯康 HEXAGON	Optiv Lite 432	2.5um	PC-DMIS Vision	3		400*300*200
輪廓度量測儀 Contracer	三丰Mitutoyo	CV-3100S4	2.5UM	FORMPAK 1000	1		
Image Measure Equipment	MICRO VU	EXCEL 501 HC	2.5um	Inspec		1	400*500*160
平面度测量仪 Flatness Measure Equipment	康宁CORNING	FM200	0.05um	FlatMaster	1		30~200
粗糙度测量仪Rough Measuring Machine	马尔Mahr	M2	0.002um		1		1.75&5.6&17.5
	霍梅尔Hommel	W5	0.005um		1		1.5&4.8&15
	Mahr	PS10	-			1	1.5mm&4.8mm&15mm
洛式硬度機	FT	FR	5°↓		2		
	FT	FR_3e	-			1	



其它設備—台灣廠區

設備名稱Equipment	設備型號 Manufacturer/Country	加工行程(mm) Processing stroke	Accuracy精度 (mm)	數量 Quantity
CNC Machine Total:7sets	快捷AV-128/Taiwan	1200*800*500	0.01mm	1
	快捷AV-70S/Taiwan	700*400*350	0.002mm	1
	力美Delta 6/China	600*400*300	0.003mm	1
	東台TMV-400/Taiwan	400*250*250	0.05mm	2
	台中精機Vcenter 70C/Taiwan	700*480*510	0.01mm	1
	台中精機Vcenter 102C/Taiwan	1020*520*560	0.01mm	1
放電加工機 Electrical Discharge Machine	慶鴻D433CL/Taiwan	400*250*200	0.02mm	2
精密平面磨床 Precision Grinding Machine	FSG-1632ADIV/Taiwan	800*400	0.002mm	2
Surface Grinding Machine	FSG-3A818/Taiwan	450*200	0.002mm	1
半自動磨床 Automatic Grinding Machine	FSG-2A818/Taiwan	450*200	0.002mm	2
成型研磨機 Grinding Machine	福裕FSG-614MP/Taiwan	360*150	0.002mm	1
	大同TSG-350/Taiwan	360*150	0.002mm	3
外圓研磨機 Outer Grinding Machine	僑佳JAG-02SP/Taiwan		0.005mm	1
碳氫清洗機 Hydrocarbon Cleaning Machine	超藝CH-HMTV-3150			1
自動砂帶毛刷機 Auto-Belt Machine	勝諭-MS-412-2S-2B			1

其它設備—中國廠區

Equipment	Manufacturer/Company	Accuracy(mm)	Quantity
線切割機Wire cutting machining Total: 17Sets	西部/JAPAN	0.003mm	3
	慶鴻/TAIWAN	0.003~0.005mm	14
CNC數控加工中心 CNC machine Total:18Sets	YASDA/JAPAN	0.003mm	1
	快捷/TAIWAN	0.01mm	3
	慶鴻/TAIWAN	0.02mm	4
	東台/台中精機/大立/TAIWAN	0.02mm	6
	三控/普什/CHINA	0.02~0.05mm	4
電火花加工機 Electrical Discharging machine Total:7 Sets	MAKINO / JAPAN	0.005mm	1
	慶鴻/TAIWAN	0.02~0.05mm	6
精密平面磨床 Surface Grinding Machine Total:7Sets	NAGASHIMA/JAPAN	0.001mm	1
	宇青/上一/TAIWAN	0.0035mm	6
CNC車床 Lathing Machine	東台/TAIWAN	0.01mm	7
成型研磨機Grinding machine Total:5Sets	福裕/TAIWAN	0.002mm	1
	大同/TAIWAN	0.002mm	4
半自動磨床 Automatic Grinding machine	FSG-2A818/TAIWAN	0.002mm	1
手動銑床 Milling machine	福裕/TAIWAN	0.2mm	1
CNC高精度治具研磨機 Grinding machine	瑩瞬18SS/TAIWAN	0.2mm	1
外圓研磨機Outer Grinding machine	J/G-510CM/TAIWAN	0.002mm	1
外圓研磨機Outer Grinding machine	僑佳JAG.04SP/TAIWAN	0.005mm	1

其它設備—中國廠區

熱處理Heat Treatment

1. 1.5T的易普森密封箱式多用炉生产线 7套 1.5 T

IPSEN (Germany) multi-functional furnace 7 set
 碳氮共滲處理Carbon-Nitrogen Process
 滲碳處理Carburization Process
 光亮淬火Bright for Door Lock Parts
 調質處理Quenching & Tempering Process

02. 井式气体氮化炉 Gas Nitriding Furnace 2 set

滲氮處理Nitrogen Process
 氮碳共滲處理Nitro-Carburizing Process
 去应力退火處理Stress Relief Annealing Process

03. 預抽真空氮化爐 Vacuum Nitriding furnace 1 set

光亮去应力退火處理 Stress Relief Annealing
 光亮軟硬氮化處理 Gas/Soft Nitriding
 氧化處理 Oxidation

04. 感應淬火設備 Induction Hardening machine 1 set

05. 磁粉探伤仪 magnetic defect detector

06. 德国斯派克直读光谱仪 Germany spectro direct reading spectrometer

07. 维氏硬度机 Vickers hardness tester

08. 洛氏硬度机 rockwell hardness tester

09. 光学金相显微镜 optical microscope





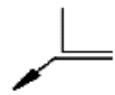
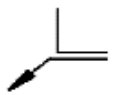


• Customers






Others Equipment-China Plant

Precision Grinding

Description / Model	Manufacturer / Country	Quantity	Accuracy
精磨機 Fine grinding Machine/ AC1000 F / L 	Peter Wolters / Germany	7	 0.003 mm
精磨機 Fine grinding Machine/ AC700/AC1200/AC1250	Peter Wolters / Germany	5	 0.003 mm
立式雙端面磨床 Vertical Double side grinding	580/v5p/SL-9/China	8	// 0.04mm
臥式雙端面磨床 Horizontal Double side grinding/ MY7675	JC / China	5	// 0.05mm
全自動刷毛邊機 Auto De-burring Machine 	LOESER / Germany	1	 -0.25mm
全自動刷毛邊機 Auto De-burring Machine	CFTC self designed concept / China	6	 -0.25mm
清洗線 Auto Cleaning Line	Gangxin / China	5	0.0003mg/100mm

包塑機 Insert Molding

Insert Molding	Model	Quantity
MUTLIPLAS / 百塑 	VH-2R-110T	1
MUTLIPLAS / 百塑	V4-SD-85T	1
MUTLIPLAS / 百塑	V3-R-85T	1
MUTLIPLAS / 百塑	V3-R-120T	6
Feng - Tie / 豐鐵 / 百塑	160T	2
3D QV 画像測定器/REXCQN Germany 		1
渦流探傷檢查機 IBG-Eddy Current Inspection /Germany 		1



▶ 沖壓區

1. Stamping environment



▶ 沖壓區

機械手臂自動取料(傳送系統)



▶ 沖壓廠區

2. Inspection area/equipment and personnel qualification certification



和勤精機股份有限公司

請員工填妥此公司「沖壓」相關規則可隨時具備就業資格,請此證書和實業執照配合。



姓名: 何裕權
工號: h08000
部門: 沖壓課

機台操作執照:

■ 250L	■ CEL 400L	■ SLD
1100t		
■ 32N-50t	■ 1SD-400t	■ CCP-200t
■ S81-150L	■ EL-300L	■ ED-500L

■ 漆殼壓機
■ 胎輪壓機
■ 衝壓機
■ 鋼管壓機

機台檢校執照:

■ 壓力機檢校
■ 雙冲機檢校
■ 連續沖床
■ 鋼管各款機台

有線沖床

檢測工具使用執照:

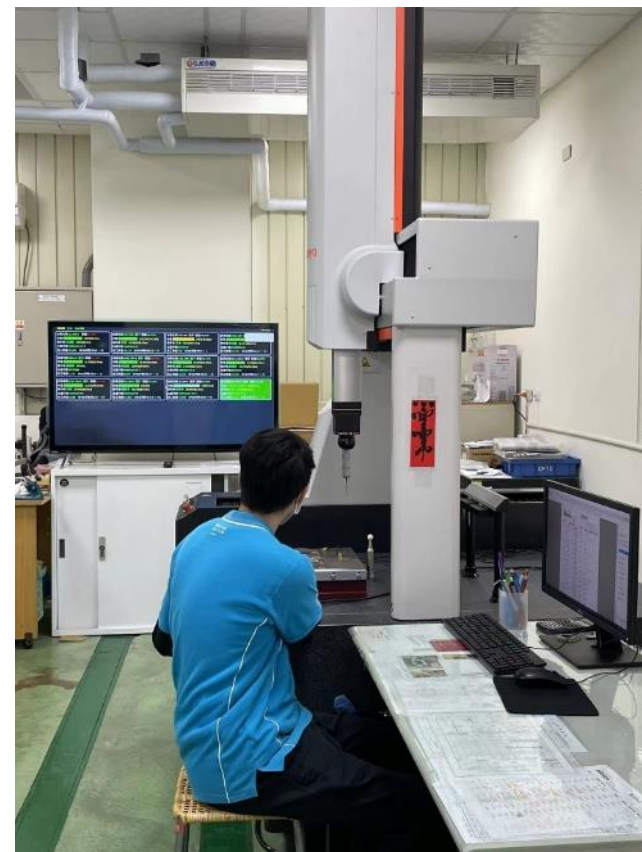
■ 深度規	■ 分厘卡	■ 游標卡尺	■ 吹槍
■ 鋼鉗	■ 塞尺		

名單填寫執照:

★效期: 2021/1/1-2023/12/31

▶ 量測室

CMM room 三次元



▶ 模具室



▶ 振動研磨Tumbling process:

- ◆ 浸泡式全自動滾動研磨線
有7個大槽同時可生產42個滾桶
- ◆ 上料→脫脂→振研42個桶槽→防鏽→自動篩選
下料（自動脫脂、研磨、防鏽、振研石與產品自動篩選，並有輸送帶將振研石帶回上料區）
- ◆ 優點：產能大、省力



Description/Location	Taiwan	China
Automatic Tumbling line	1	1

▶ 攻牙區 Tapping process:

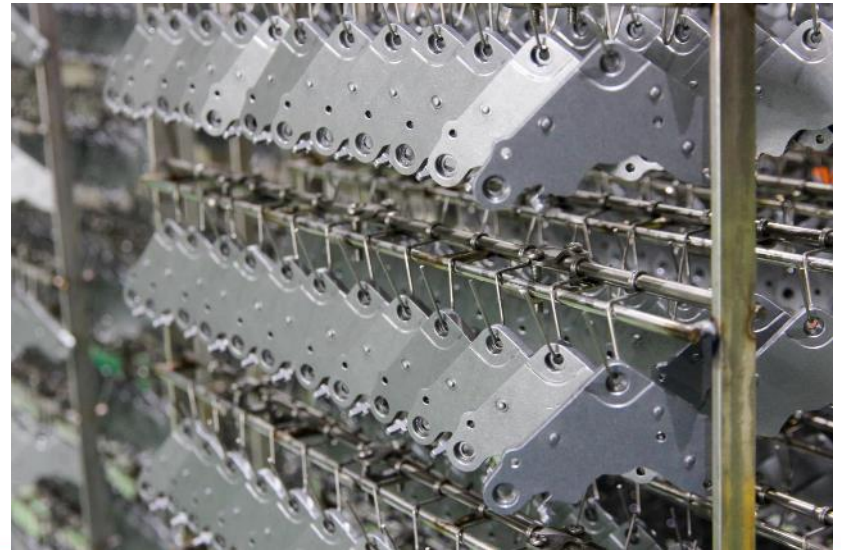
Tapping environment



Description/Location	Taiwan	China
Tapping machine	8	3

▶ EN plating process:

- ◆ 全自動無電解鎳電鍍線(Electroless Nickle (EN))
- ◆ 化鎳線EN槽先進的全自動藥水分析、添加機控制器和等量添加系統，可保證EN槽參數的準確、及時、穩定



Description/ Location	Taiwan	China
EN Line	1	1

▶ AOI 系統

CCD environment













Description/ Location	Taiwan	China
CCD	6	3

Description/ Location	Taiwan	China
CCD	400K/D	210K/D



其它:實驗室

Plating thickness	Tape test	Boiling test	Nitric test	Ferroxyl test
X-RAY	3M 853	VISUAL	VISUAL	
				
Humidity test	Bend test	Wettability test	High Phosphorus	LPC
Humidity chamber	Bend machine	Follow customer request	OVEN	132KHZ(0.3um)
				

其它: 產線信息化-Smart box

Enter

- Personnel entered the product information into computer system timely
- 人員通過電腦即時的輸入產業信息化

Feedback

- Show capacity and yield timely for supervisor and operators
- 即時顯示產能狀況

■ After the information input of the handheld is connected to the screen, the status information of each machine is integrated, and the QA measurement room will receive a notification when the measurement is required. If the measurement result is NG, the mold room will receive an alarm

設備名稱	狀態	今日(%)有效稼働率	工單編號	生產料號	完工	SPK / 標準	(模具)生產狀態	操作者
SCI-120-2	●	26.59%(24.67%)	IWOI-2203290003	PRX001A	6,510	0 / NA	(0)量產沖壓(油) (6,281 PCS)(7h: 23m)	林冠廷 (6,510 PCS)(7h:45m)
SHI-160-3	●	0.00%(0.00%)	IWOI-2204010001	PRX001A	0	0 / NA	(4)閒機 (0h: 0m)	謝正偉 (0h:0m)
CBL-300-1	●	27.96%(42.81%)	IWO9-2203300005	SMM2149-53-T	7,924	81 / NA	(0)量產沖壓(油) (2,184 PCS)(0h: 42m)	鄭嘉全 (7,923 PCS)(7h:58m)
CBL-300-2	●	28.22%(64.75%)	IWO9-2204010001	SMM255-53	15,375	0 / NA	(0)量產沖壓(油) (2,785 PCS)(0h: 48m)	多銘 (15,375 PCS)(7h:54m)
CBL-300-3	●	25.37%(20.19%)	IWOI-2204010002	SMM234A-52	2,840	24 / NA	(0)試模沖壓(未漆) (0h: 0m)	陳志忠 (25,790 PCS)(7h:59m)
CBL-400	●	27.15%(27.55%)	IWO9-2204010004	SMM267-53-T	4,873	0 / NA	(0)量產沖壓(油) (1,249 PCS)(0h: 26m)	謝俊任 (25,621 PCS)(7h:40m)
CBL-500	●	25.96%(41.19%)	IWO9-2203230006	SMM238-53-T	7,968	0 / NA	(2)首件量測 (CMM) (50 PCS)(0h: 20m)	謝嘉瑞 (7,885 PCS)(7h:36m)
MFA-3	●	26.17%(6.25%)	IWOI-2203920009	PMT0030	190	0 / 25	(1)下機 (0 PCS)(0h: 1m)	何志雄 (298 PCS)(7h:59m)
ISD-400	●	21.81%(37.87%)	IWOI-2203300020	PDE0010	384	0 / 3	(0)量產沖壓(未漆) (331 PCS)(0h: 23m)	哈達 (331 PCS)(0h:23m)
KL300-3	●	29.14%(40.27%)	IWO9-2203250022	SMM295-53-T	9,492	0 / NA	(2)首件量測 (0 PCS)(0h: 1m)	何文傑 (30,964 PCS)(7h:50m)
KL300-4	●	28.86%(71.43%)	IWOI-2203310005	SMM239-52	15,832	0 / 50	(0)量產沖壓(油) (1,338 PCS)(0h: 44m)	謝正偉 (15,832 PCS)(7h:51m)
KL300-5	●	26.44%(48.19%)	IWO9-2204010030	SMM233A-53-T	6,348	0 / NA	(0)量產沖壓(油) (3,067 PCS)(0h: 18m)	阮友全 (6,348 PCS)(7h:52m)
KL300-6	●	28.95%(72.22%)	IWO9-2203300032	SMM227-53	14,363	64 / NA	(0)量產沖壓(油) (5,329 PCS)(0h: 57m)	阿星 (37,042 PCS)(5h:53m)
SCI-220	●	29.04%(50.17%)	IWOI-2203310028	SMM181-52	14,390	62 / 50	(0)量產沖壓(油) (1,320 PCS)(0h: 23m)	阿星 (14,156 PCS)(7h:43m)
SUD-1000	●	17.24%(31.24%)	IWSI-2203030001	PTB0020	1,476	0 / NA	(1)上機 (0 PCS)(0h: 2m)	何志雄 (0h:0m)
FB-850	●	0.00%(0.00%)	IWSI-2203140006	SDM0010	0	0 / 14	(1)無生產排程 (0h: 0m)	謝俊任 (0h:0m)



核心技术

PRECISION SOLUTION

和勤精機

精

精密冲壓

鍛

冲鍛複合

伸

深引伸

連

連續模

和勤精機是你最好的選擇

THANKS!

感謝聆聽 請多指教

PRECISION SOLUTION